

**Calhoun County Recycling Center Project
Phase 2**

CCRD: DLS/ARK

3/8/2016

PROJECT LOCATION

13300 15 Mile Road, Marshall MI 49608

The Engineer will establish the location for all items of work.

PROJECT DESCRIPTION

Excavate native material from proposed recycling center area to be stockpiled at Calhoun County Road Department facility. Place & compact 6-inch sand subbase and 6-inch aggregate base. Place HMA 13A surface over entire site at a depth of 4-inches in two (2) lifts. Install appropriate fencing & gates around the hoppers to contain recycling operation, prevent unauthorized dumping, and to allow for ingress & egress to the recycling area by county patrons.

PAD

HMA, 13A	270 Ton
HMA 13A Hand Patching	15 Ton
Aggregate Base,	1,112 Syd
Earth Excavation	700 Cyd
Sand Subbase Class III	1,112 Syd

FENCING

6-ft. tall 3-rail aluminum ornamental fencing	223 LF
4-ft. wide aluminum ornamental gate	2 units
12-ft. wide aluminum ornamental double gate	1 unit
6-ft. tall black vinyl coated chain link fencing, commercial grade	86 LF
24-ft. wide galvanized barrier gate	1 unit
54-ft. wide galvanized barrier gate	1 unit
30-ft. opening x 6-ft. tall galvanized chain link cantilever gate with an automatic gate operator that includes (1) impact sensing edge, (1) photo eye, (1) keypad, and (25) transmitters	1 unit

*Options for fencing bid shall include:

- **Option 1:** Industrial grade ornamental with black chain link & galvanized cantilever
- **Option 2:** Commercial grade ornamental with black chain link & galvanized cantilever
- **Option 3:** Black chain link in lieu of ornamental with galvanized cantilever
- **Option 4:** All galvanized materials

Please direct any and all questions to CCRD Director of Operations Doug Steffen at (269) 781-0031 or dsteffen@calhouncountymi.gov.

**Calhoun County Recycling Center Project - Phase II
Bid Item Sheet**

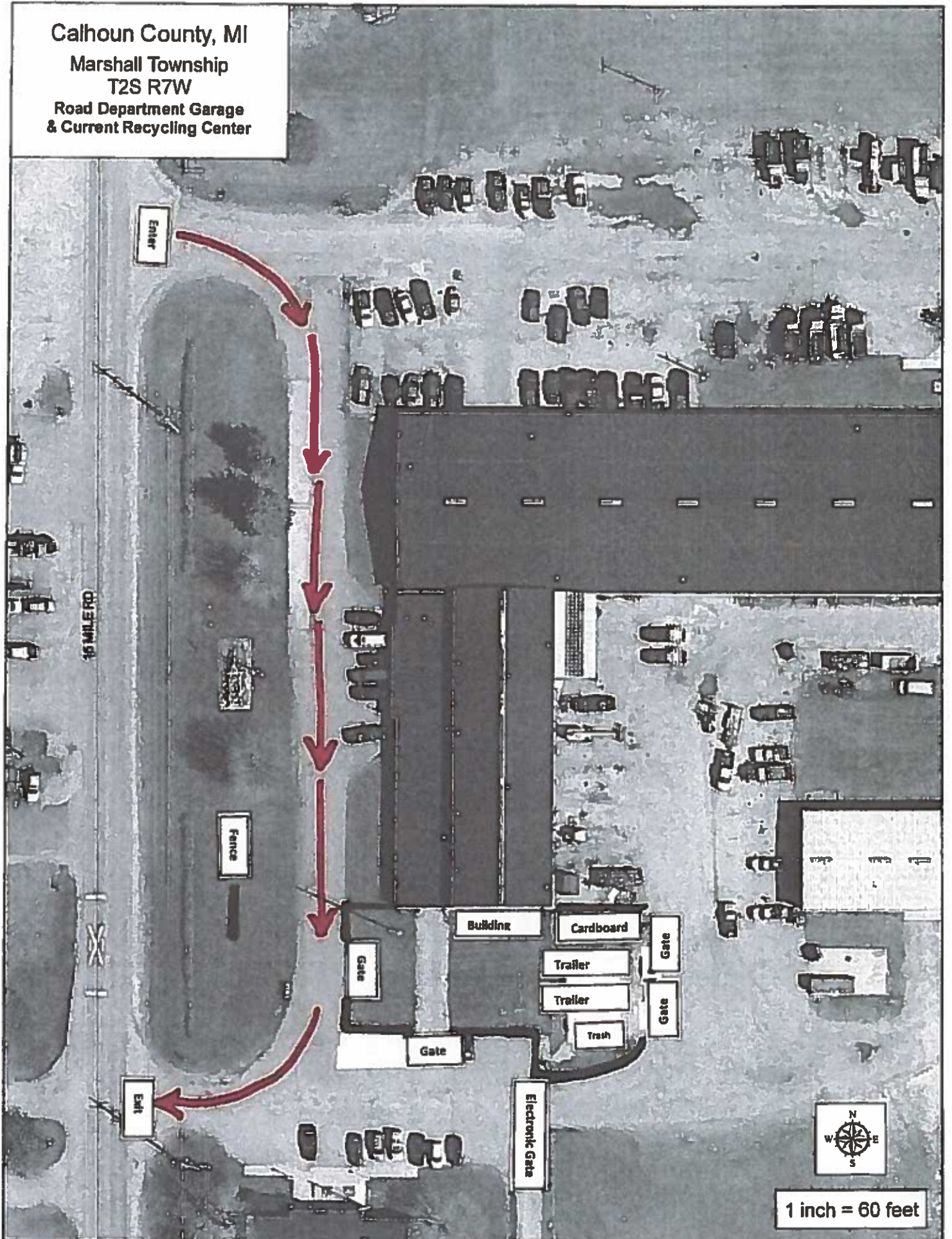
3/22/16

Bid Item	Quantity	Unit of Measure	Price	
			Dollars	Cents
HMA, 13A	270	TON		
HMA, 13A, Hand Patching	15	TON		
Aggregate Base	1,112	SYD		
Earth Excavation	700	CYD		
Sand Subbase, Class III	1,112	SYD		
6-ft. tall, 3-rail aluminum ornamental fencing	223	LF		
4-ft. wide aluminum ornamental gates	2	EA		
12-ft. wide aluminum ornamental double gate	1	EA		
6-ft. tall black vinyl coated chain link fencing, commercial grade	86	LF		
24-ft. wide galvanized barrier gate	1	EA		
54-ft. wide galvanized barrier gate	1	EA		
30-ft. opening x 6-ft. tall galvanized chain link cantilever gate with an automatic gate operator that includes (1) impact sensing edge, (1) photo eye, (1) keypad, and (25) transmitters	1	Lump Sum (LS)		
		TOTAL:		
Option 1: Industrial grade ornamental with black chain link & galvanized cantilever	1	LS		
Option 2: Commercial grade ornamental with black chain link & galvanized cantilever	1	LS		
Option 3: Black chain link in lieu of ornamental with galvanized cantilever	1	LS		
Option 4: All galvanized materials	1	LS		

AWARD OF BID

Upon award of bid, the successful contractor is required to attend (a) start-up meeting(s) with CCRD personnel to discuss the projected work schedule, equipment to be used, and intended hours of work. **PLEASE SUBMIT ANY QUESTIONS BY: 04/04/2016 at 12:00pm (Local Time) to dsteffen@calhouncountymi.gov**
BID RESPONSES DUE: 04/07/2016 at 3:00pm (Local Time) via email to kalbrecht@calhouncountymi.gov

Calhoun County, MI
Marshall Township
T2S R7W
Road Department Garage
& Current Recycling Center



16 MILE RD

Enter

Fence

Gate

Building

Cardboard

Gate

Trailer

Trailer

Gate

Trash

Gate

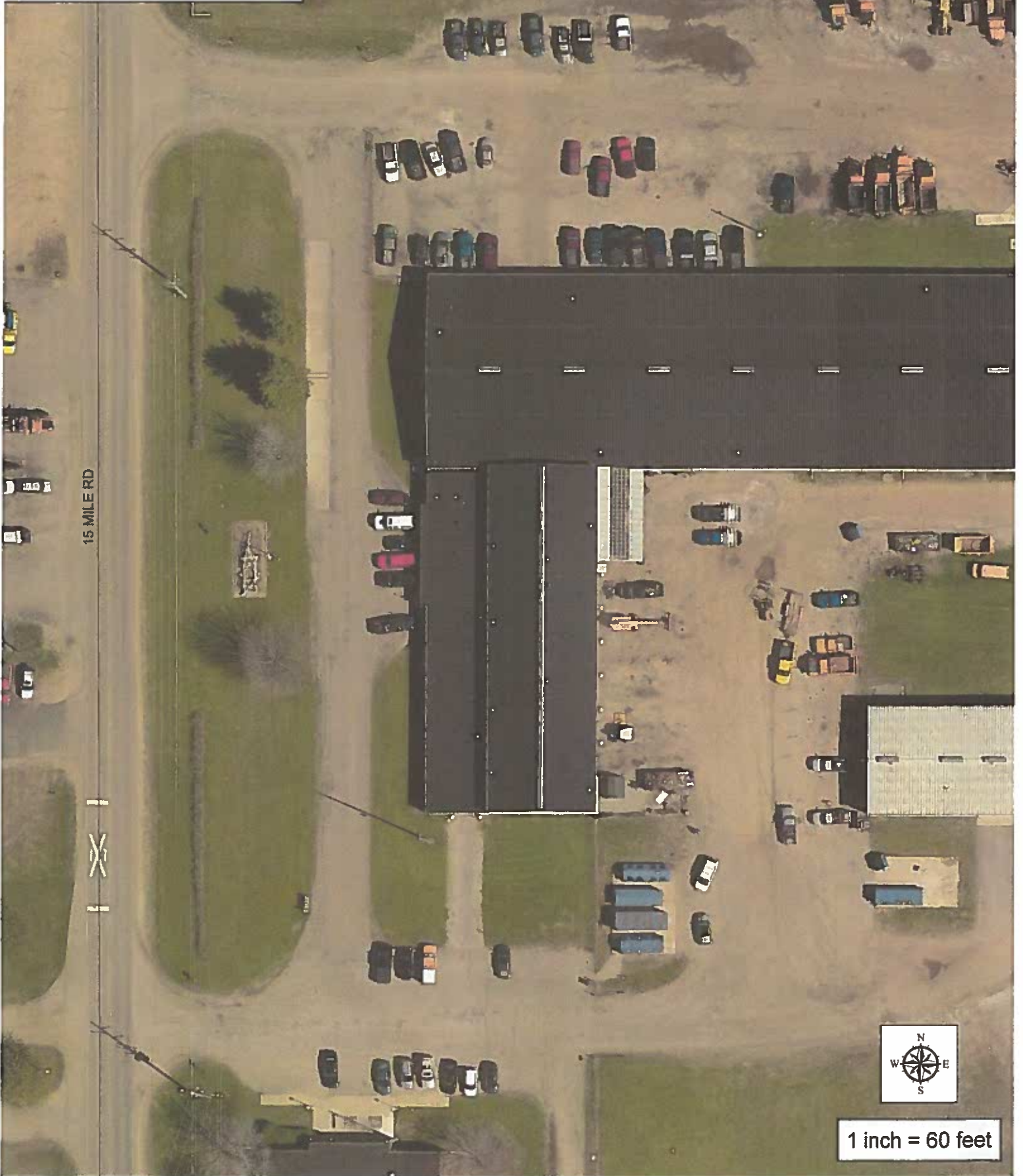
Electronic Gate

Exit



1 inch = 60 feet

Calhoun County, MI
Marshall Township
T2S R7W
Road Department Garage
& Current Recycling Center



1 inch = 60 feet

COMPLETE FOR BID SHEET

Company or Bidder's Name: _____

Address: _____

City: _____ **State:** _____ **Zip:** _____

Telephone Number: _____ **Fax Number:** _____

Contact Person: _____

Title: _____

Email Address: _____

Authorized Signature: _____

Date: _____

EXCEPTIONS/NOTES: _____

Quantities shown within this contract shall not be construed to represent any amount which the County shall be obligated to purchase under this contract, or relieve the contractor of his obligation to fill all orders placed by the County.